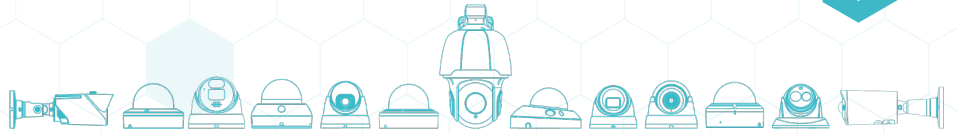


RETAIL SOLUTIONS



OUR PRODUCTS ARE THE PERFECT SOLUTION FOR YOUR RETAIL STORE

Welcome to the future of retail security and intelligence with G.S.D. In today's competitive retail landscape, staying ahead requires more than just securing your assets; it demands a strategic approach to customer experience and operational efficiency. Our cutting-edge surveillance solutions are designed to meet these demands, providing comprehensive tools that not only safeguard your store but also deliver actionable insights to drive your business forward.

USER-FRIENDLY INTERFACE

Enable new employees to quickly grasp system operations, ensuring adherence to store policies

FACIAL RECOGNITION MANAGEMENT

Save faces and associate them with names, monitor staff attendance, and receive a notification upon entry

CROWD CAPACITY MANAGEMENT

Count individuals within defined areas, optimizing store traffic management and controlling maximum capacity

HEAT MAP VISUALIZATION

Identify under utilized aisles and areas, prompting strategic product placement and floor layout optimizations

STATISTICAL ANALYSIS

Access statistical reports on customer demographics, peak traffic times, and dwell times and easily export these insights to excel

LICENSE PLATE MANAGEMENT

Count recurring visits within a specified time range, assign plates to specific groups and trigger alarms when a certain plate is detected

E-MAP

Visually map out camera locations in your store to identify security concerns and optimize camera placement

QUEUE LENGTH DETECTION

Counts the number of people in line and helps manage customer flow by notifying staff when lines get too long

SCALABILITY AND INTEGRATION

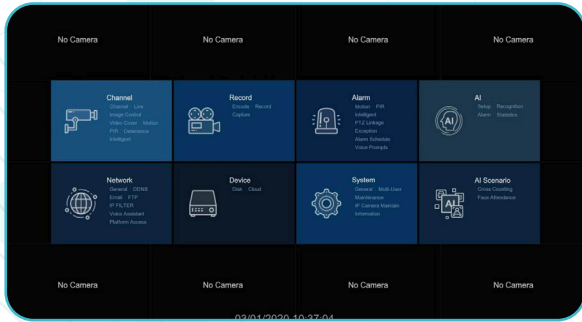
Seamlessly integrate with existing retail systems and effortlessly expand your surveillance network as your business grows

REMOTE MONITORING AND ALERTS

Receive notifications on your smartphone regarding suspicious activities for immediate response to potential incidents

**DISCLAIMER: It is the responsibility of the end user to comply with local regulations regarding personal privacy when using facial recognition technology.

RETAIL SOLUTIONS

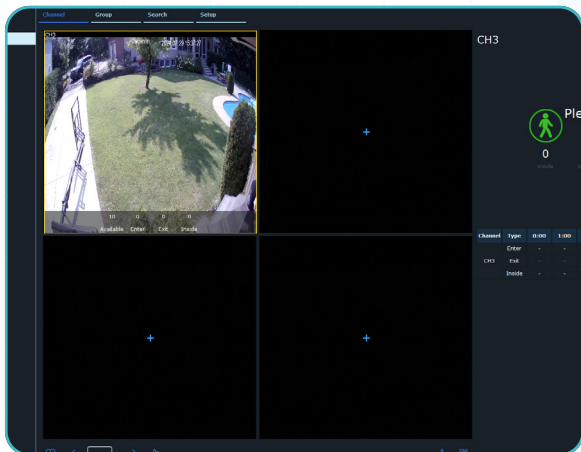
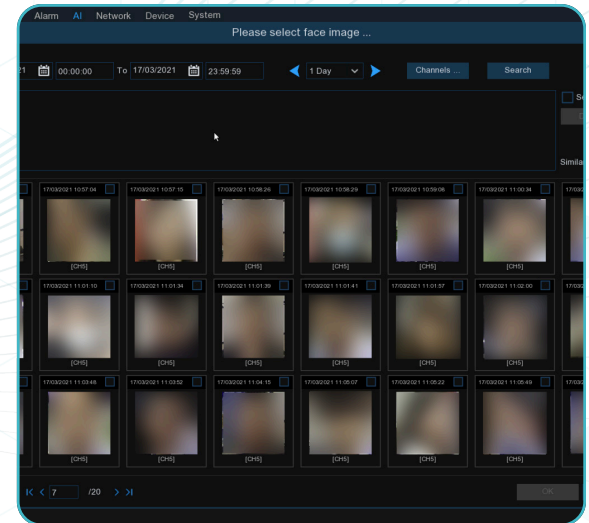


USER-FRIENDLY INTERFACE

Empower your staff with intuitive interfaces and user-friendly controls that simplify navigation and setup of surveillance systems. **Enable new employees to quickly grasp system operations, effectively monitoring customer service areas and ensuring adherence to store policies for seamless daily operations.**

FACIAL RECOGNITION MANAGEMENT

Implement cutting-edge facial recognition technology to enhance customer experiences, bolster security measures, and streamline staff management. This advanced system allows you to **save faces and associate them with names***, enabling **personalized interactions such as greeting VIP customers by name** after receiving a notification upon entry. It also provides **notifications for returning shoplifters**, facilitating prompt action, and allows you to **monitor staff attendance** to ensure seamless operations during shifts, optimizing overall efficiency and service delivery.



CROWD CAPACITY MANAGEMENT

Utilize advanced AI scenarios to accurately **count individuals within defined areas, optimizing store traffic management and controlling maximum capacity.** This technology allows you to **pinpoint peak hours** and dynamically allocate staff resources, reducing checkout wait times and enhancing overall customer satisfaction. Set triggers to **monitor when capacity limits are reached**, and continuously **calculate the number of people entering and exiting the region in real time**, ensuring efficient management and improved safety.

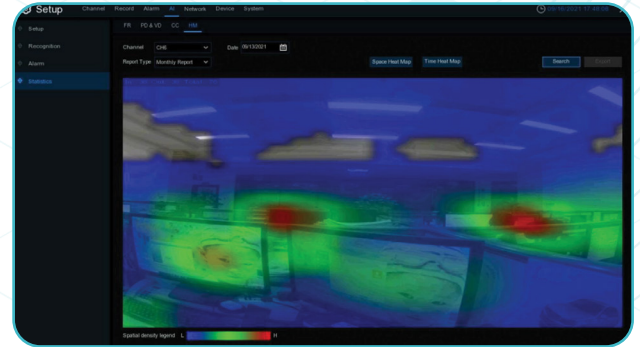
**DISCLAIMER: It is the responsibility of the end user to comply with local regulations regarding personal privacy when using facial recognition technology.

RETAIL SOLUTIONS



HEAT MAP VISUALIZATION

Gain deep insights into customer behavior and store navigation patterns through detailed heat maps. This powerful tool allows you to **identify underutilized aisles and areas**, prompting **strategic product placement** and floor layout optimizations that enhance visibility and drive increased sales.

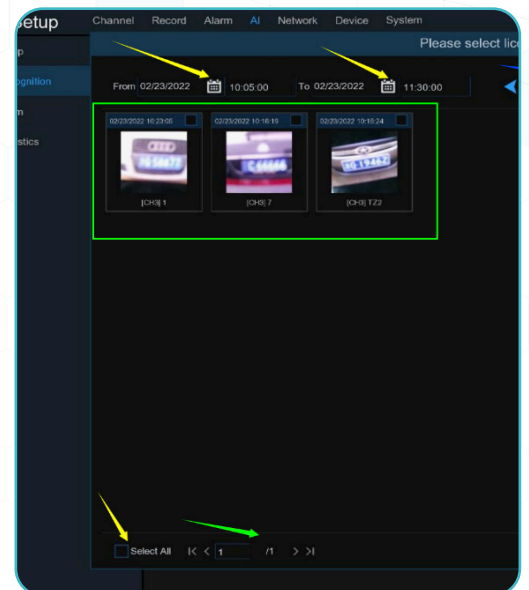


STATISTICAL ANALYSIS

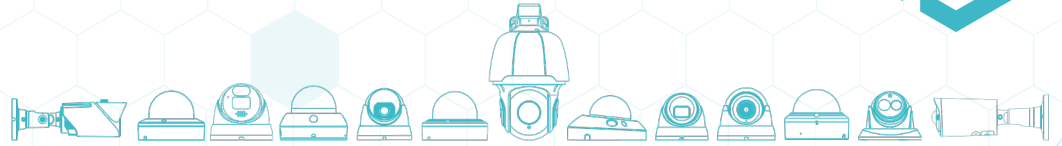
Access comprehensive **statistical reports on customer demographics, peak traffic times, and dwell times** to make informed business decisions. Easily **export these insights to an excel sheet** for detailed analysis, enabling tailored promotions that resonate with specific customer segments, thereby fostering increased engagement and loyalty.

LICENSE PLATE MANAGEMENT

This advanced feature ensures controlled access and meticulous monitoring of vehicle movements in parking areas. With license plate management capabilities, you can **count recurring visits within a specified time range**, **assign plates to specific groups** such as employees, trade workers, or recurring customers, and **trigger alarms and notifications when a certain plate is detected**. Utilize these functionalities to manage employee parking effectively, maintain designated spaces, and **prevent unauthorized vehicles from occupying restricted areas**, ensuring a streamlined and secure parking environment.



RETAIL SOLUTIONS

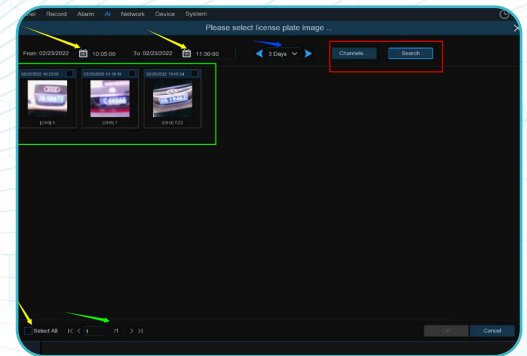


E-MAP

Our E-Map visually maps out camera locations in your store, offering a clear overview of your security setup. This feature streamlines monitoring by providing easy access to live and recorded footage from specific areas. It helps in swiftly identifying and addressing security concerns, optimizing camera placement, and ensuring that all critical store areas are effectively monitored.

QUEUE LENGTH DETECTION

Our Queue Length Detection feature counts the number of people in line and alerts you when the queue exceeds a set threshold. In a retail setting, this helps manage customer flow by notifying staff when lines get too long, enabling prompt action to improve service efficiency and enhance the customer experience.



SCALABILITY AND INTEGRATION

Seamlessly integrate with existing retail systems and effortlessly expand your surveillance network as your business grows. This scalable solution future-proofs your investment, ensuring consistent security measures and operational standards across multiple locations as your retail chain expands.

REMOTE MONITORING AND ALERTS

Stay connected and proactive with remote monitoring capabilities and instant alerts. Receive real-time notifications on your smartphone regarding suspicious activities outside business hours, enabling swift assessment and immediate response to potential incidents, thereby bolstering overall security measures.