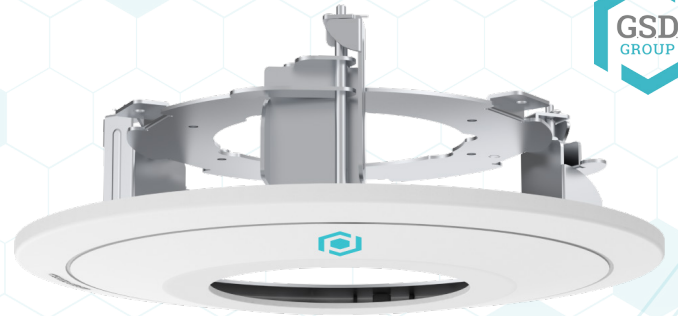
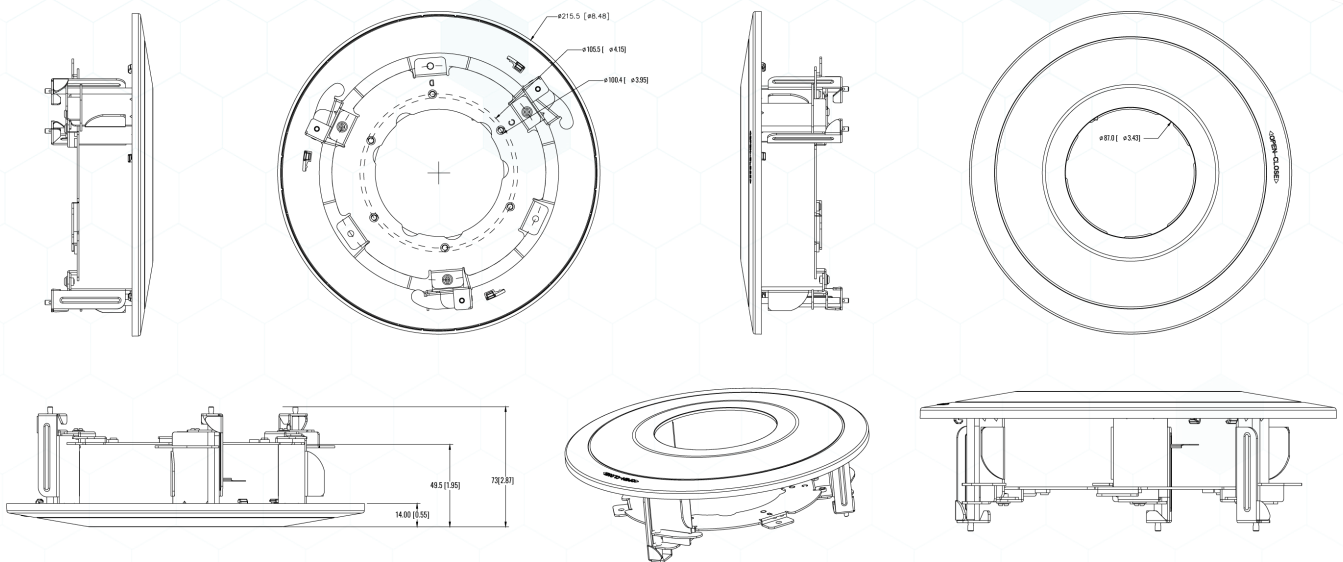
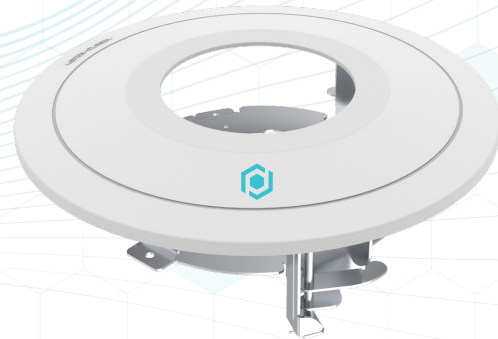
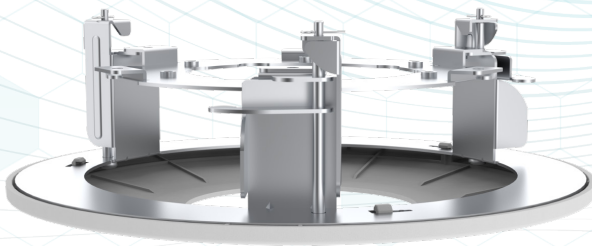


RECESSED BRACKET

SUSPENDED IN-CEILING BRACKETS



Our **DCMB2** recessed security camera bracket is a device that is designed to securely mount a security camera within a recessed area of a wall or ceiling. The recessed design of the bracket is particularly useful for applications where a discreet camera installation is desired, such as in retail stores, office buildings, or residential homes. By mounting the camera within a recessed area, the camera can blend in with the surrounding environment, making it less noticeable to potential intruders or other individuals who may be attempting to circumvent the security system.

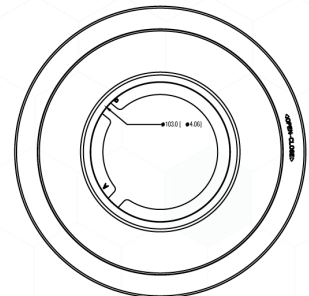
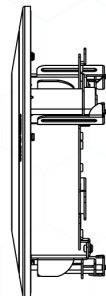
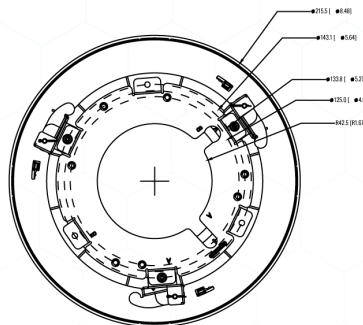
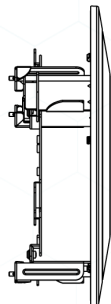
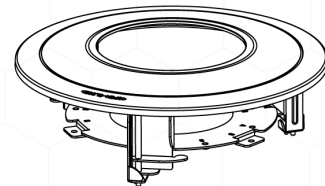
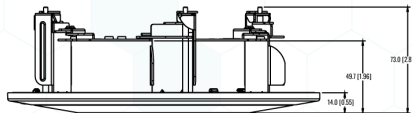
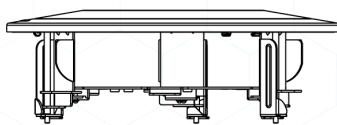
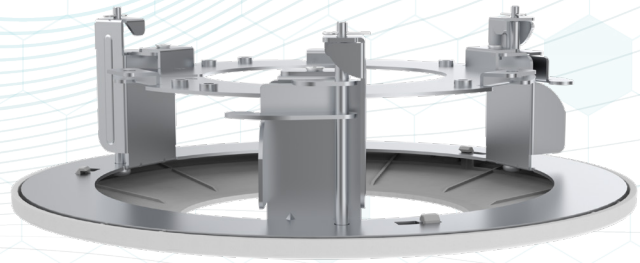
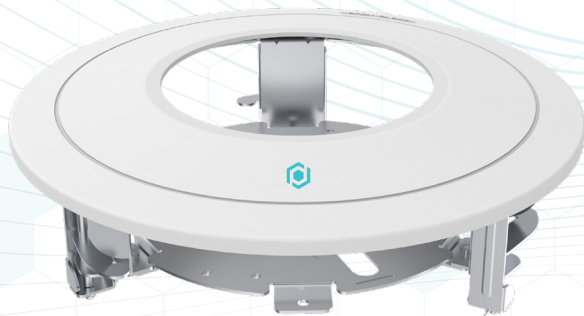
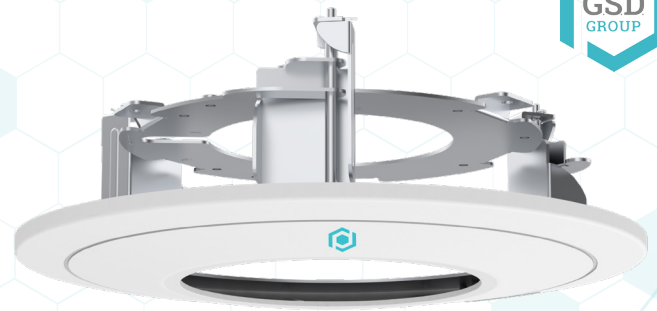




RECESSED BRACKET

SUSPENDED IN-CEILING BRACKETS

Our **DCMB6** recessed security camera bracket is a device that is designed to securely mount a security camera within a recessed area of a wall or ceiling. The recessed design of the bracket is particularly useful for applications where a discreet camera installation is desired, such as in retail stores, office buildings, or residential homes. By mounting the camera within a recessed area, the camera can blend in with the surrounding environment, making it less noticeable to potential intruders or other individuals who may be attempting to circumvent the security system.



2024 Global Surveillance Development, GSD Group and GSD are registered trademarks of Global Surveillance Development Group, Inc. in Canada and / or other countries. We reserve the right to change the design and specifications of the product Without notice and without incurring any obligation.

