

# TOTAL VIEW CAMERAS



## EX-IR LEDS

Lit only in Day/  
Night mode

## F1.0 SUPER APERTURE

F1.0 super aperture collects more light to produce brighter images. (F1.2 for varifocal lens) 4x more light than conventional cameras.

## ADVANCED SENSOR

Vastly improves the utilization of available light. Self-adaptive 3D Digital Noise Reduction removes noise and ensures full motion video.

## WHITE LIGHT LEDS

Supplies plenty of lights in Total View mode. Possibility of turning into warning lights in Day/Night mode.

## TOTAL VIEW MODE PRESENTS BRILLIANT COLORFUL IMAGES IN COMPLETE DARKNESS



WHITE LIGHT / IR  
DUAL LEDS



WARNING LIGHT



REAL TIME  
NOTIFICATIONS



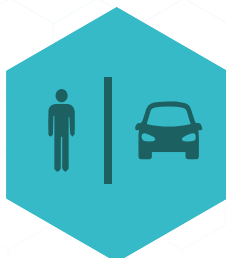
MICROPHONE



MICRO SD CARD  
SLOT UP TO 256GB



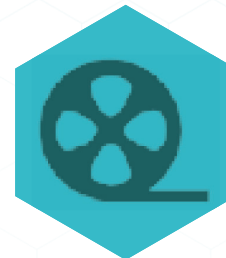
AI FEATURES



HUMAN & VEHICLE  
DETECTION



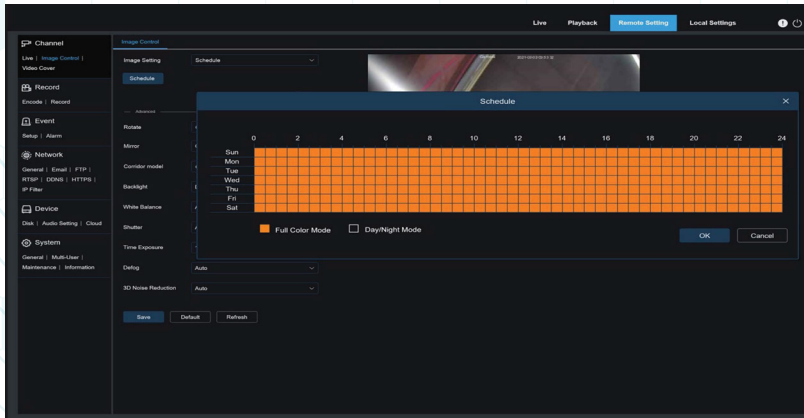
WATERPROOF &  
DUSTPROOF



H.265 / H.264



# TOTAL VIEW CAMERAS



## SCHEDULE TO YOUR NEEDS

PROGRAM YOUR OWN IMAGE SHOOTING MODES WITH THE 24X7 TIME TABLE IN THE SCHEDULE LIST

CHOOSE TOTALVIEW MODE FOR OFFICE HOURS SET TO DAY/NIGHT MODE WITH WARNING LIGHTS FOR CLOSING HOURS

OUR POWERFUL LEDS PROVIDE MORE BRIGHTNESS AND A LONGER SURVEILLANCE DISTANCE AT NIGHT

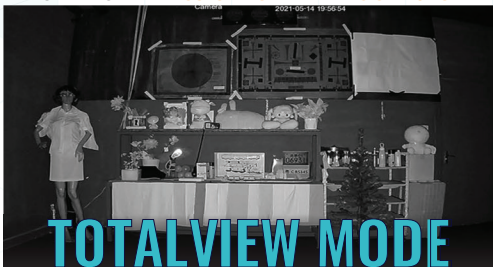


THE LIGHT AUTOMATICALLY ACTIVATES WHEN A HUMAN OR VEHICLE IS DETECTED

A TOTAL VIEW CAMERA IS A POWERFUL TOOL FOR CAPTURING A COMPLETE, COLOURED VIEW OF THE SURROUNDING ENVIRONMENT, DAY OR NIGHT!

## OUR TOTALVIEW CAMERA IN ACTION:

NORMAL CAMERA COLOR MODE / IR LEDS ON / 0 LUX



NORMAL CAMERA BLACK & WHITE IMAGE / IR LEDS



NORMAL CAMERA BLACK & WHITE IMAGE / 0 LUX



©2024 Global Surveillance Development, GSD Group and GSD are registered trademarks of Global Surveillance Development Group, Inc. in Canada and / or other countries. We reserve the right to change the design and specifications of the product Without notice and without incurring any obligation.

