



EX-IR LEDS

Lighted only in Day/Night mode

F1.0 SUPER APERTURE

F1.0 super aperture collects more light to produce brighter images. (F1.2 for varifocal lens)
4x amount of light of conventional cameras.

ADVANCED SENSOR

Vastly improves the utilization of available light.
Self-adaptive 3D Digital Noise Reduction to remove noise and ensure full motion video.

WHITE LIGHT LEDS

Supply plenty of lights in Total View mode.
Available to turn to warning lights in Day/Night mode.

TOTALVIEW MODE PRESENTS BRILLIANT COLOURFUL IMAGES IN COMPLETE DARKNESS



WHITE LIGHT / IR
DUAL LEDS



WARNING
LIGHT



REAL-TIME
NOTIFICATIONS



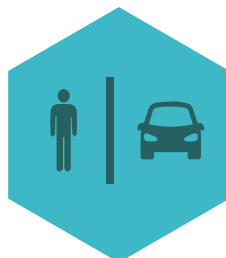
MICROPHONE IN



SD CARD



AI FEATURES



HUMAN & VEHICLE
DETECTION



WATERPROOF
AND DUSTPROOF

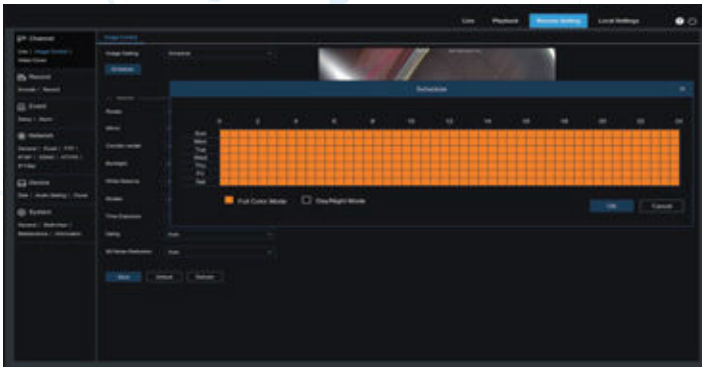


H.265 / H.264



DISTRIBUTED BY





SCHEDULE TO YOUR NEEDS

PROGRAM YOUR OWN IMAGE SHOOTING MODES WITH THE 24X7 TIME TABLE IN THE SCHEDULE LIST

CHOOSE TOTALVIEW MODE FOR OFFICE HOURS SET TO DAY/NIGHT MODE WITH WARNING LIGHTS FOR CLOSING HOURS

OUR POWERFUL LEDS PROVIDE MORE BRIGHTNESS AND A LONGER SURVEILLANCE DISTANCE AT NIGHT



THE LIGHT AUTOMATICALLY ACTIVATES WHEN A HUMAN OR VEHICLE IS DETECTED

A TOTAL VIEW CAMERA IS A POWERFUL TOOL FOR CAPTURING A COMPLETE, COLOURED VIEW OF THE SURROUNDING ENVIRONMENT, DAY OR NIGHT!

OUR TOTALVIEW CAMERA IN ACTION:

NORMAL CAMERA COLOR MODE / IR LEDS ON / 0 LUX



TOTALVIEW MODE

NORMAL CAMERA BLACK & WHITE IMAGE / IR LEDS



COLOR MODE

NORMAL CAMERA BLACK & WHITE IMAGE / 0 LUX



DAY/NIGHT MODE

GSD TOTALVIEW CAMERA WHITE LIGHT LEDS / 0 LUX



GSD TOTALVIEW CAMERA COLOR IMAGE/NO WHITE LIGHT LED



GSD TOTALVIEW CAMERA BLACK & WHITE IMAGE / 0 LUX



For more information, please contact our sales team sales@gsdgroup.ca